

# VENA240/290

## Wall Mounted Axial Fans

**! IMPORTANT**

This manual must be read in full before Installation, Operation and Maintenance of the units supplied. Please ensure that this document is passed to the end user. This manual forms an integral part of the product and should be kept for the working life of the product. Additional copies of this and supporting documents are available by contacting VES or by visiting [www.ves.co.uk](http://www.ves.co.uk) and following the 'Download O & M's' link.

The following symbols used within this document refer to potential dangers or advice for safe operation

- Indicates hazards associated with electric current and high voltages
- Indicates hazards that require safety advice for personnel and/or potential unit/property damage
- Indicates important information

**Unit Description**

The VENA wall mounted axial fans is suitable for a range of light commercial applications including; shops, sports halls, warehouses. For full unit details please see the unit specification later in the document.

Immediately upon receipt of your VENA fan, check there is no damage to the fan, and that the four fixing screws and matching wall plugs are included within the ancillary bag.

In the event of any damage having occurred or if any item is found to be missing, it is essential to inform VES Andover Ltd. within 7 days of delivery quoting sales order number and the unit type. After this period, VES would be unable to accept any claim for damaged or missing goods.

Part Number	Description
VENA240/BS/PC .....	Wall mounted axial fan, c/w back draught shutters & pull cord operation
VENA290/BS/PC .....	Wall mounted axial fan, c/w back draught shutters & pull cord operation

**! IMPORTANT**

Before attempting to carry out any work on our units, all accompanying documentation including warning labels on the unit must be referenced. Should it be necessary to remove any component ensure that these are secured into position once reinstalled. It is critical that after any maintenance work has been conducted that all components removed /replaced be refitted correctly by a competent engineer.

**! IMPORTANT**

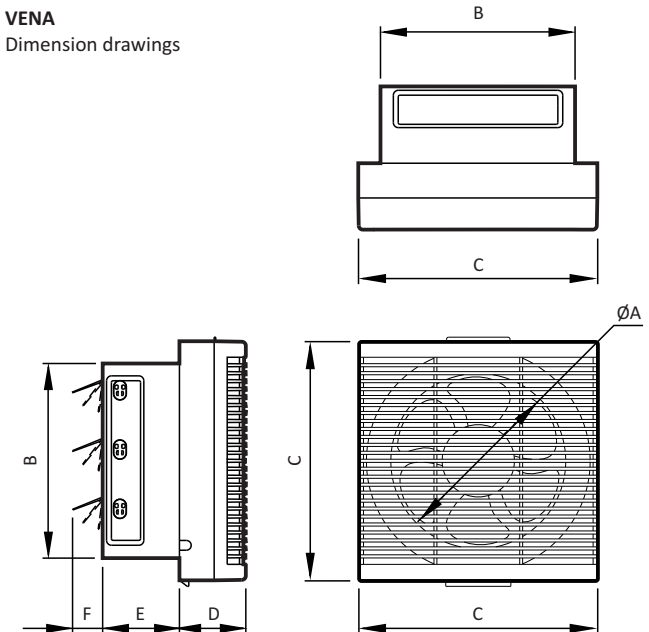
VENA fans should be installed in accordance with current IEE Regulations BS7671 and the appropriate Building Regulations.

**! IMPORTANT**

For fan positioning refer to Building Regulation for specific requirements. If installed in a room containing a fuel burning device without a balanced flue, it is the installers responsibility to ensure that is enough replacement air to prevent any fumes being drawn back down the flue when the fan is operating at full speed. VENA fans are designed for wall mounting only. These fans are not suitable for ceiling mounting. The fan should be installed with an appropriate duct kit and consideration must be given to ensure that access to all moving parts of the fan are restricted when the fan is in use.

Dimensions (mm)	ØA	B	C	D	E	F
VENA240/BS/PC	215	240	295	81	90	37
VENA290/BS/PC	267	290	340	85	90	30

VENA  
Dimension drawings



**Specification**

Power Supply	230VAC 50Hz
Operating Temperature	0~40°C
Speed (rpm)	1420
Power (W) (240/290)	30/50
Current (A) (240/290)	0.13/0.16
Insulation Class	1
Motor Protection	IPX2
Motor Type	Ball bearing



**IMPORTANT**

Before attempting to carry out any maintenance or repair work on our units, the unit **MUST BE COMPLETELY ISOLATED** from its electrical supply. Ensure a minimum of two minutes after electrical disconnection before attempting access. This will allow any moving parts to come to a rest.

**Maintenance**

1. Before cleaning, isolate the fan completely from the mains supply.
  2. Carefully remove the front cover
  3. To clean the front cover, either wipe it with a damp, lint free cloth or wash it in warm soapy water. Thoroughly dry the front cover and refit.
  4. Do not immerse the fan in water or other liquids to clean any other parts of the fan.
  5. Never use strong solvents to clean the fan.
  6. Apart from cleaning, no other maintenance is required.
- For replacement fans or install kits please visit [www.vesdirect.co.uk](http://www.vesdirect.co.uk)

**Warranty**

The fan is guaranteed against defects for 1 year from the date of purchase. If you have any problems, contact VES at the address shown below.



**WEEE Directive**

At the end of their useful life the packaging and product should be disposed of via a suitable recycling centre. Do not dispose of with normal household waste. Do not burn.



**Standards**

VENA fans conform to all relevant British and European standards and directives. Further information is available from VES Andover Ltd on request

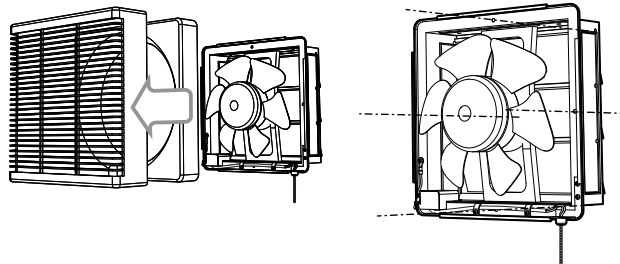


**Please ensure that this document is passed on to the end user**  
We reserve the right to alter the specification without notice ©VES Andover Ltd. 2010. No part of this publication may be photocopied or otherwise reproduced without the prior permission in writing of VES Andover Ltd.

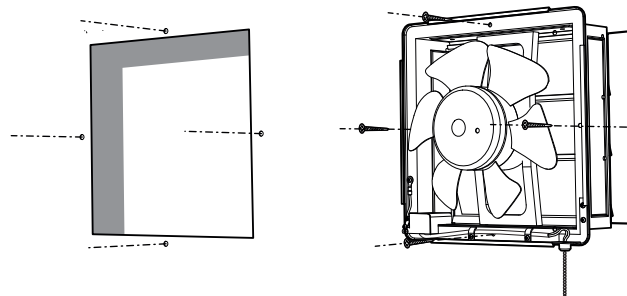


**Installation continued**

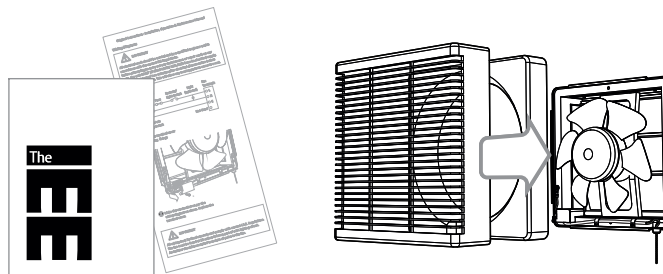
- 1 Remove the front cover from the fan by hand - tools not required
- 2 Using the fan chassis as a template, mark centre holes on mounting surface



- 3 Prepare a hole in mounting surface for the fan spigot & plug mounting holes as required
- 4 Secure fan backing plate to mounting surface



- 5 Wire the fan as per wiring diagram & instructions
- 6 Carefully replace the front fan cover



**Wiring Diagrams**

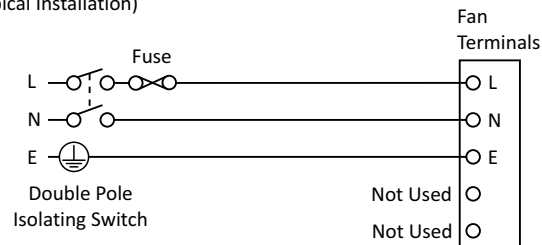


**IMPORTANT**

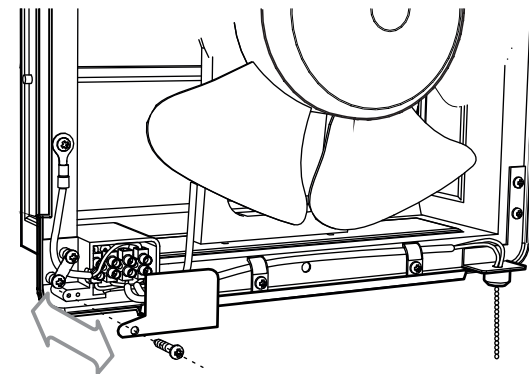
All electrical work should be carried out by a qualified engineer and in accordance with the current IEE Regulations. Before attempting to carry out any maintenance or repair work on our units, the unit **MUST BE COMPLETELY ISOLATED** from its electrical supply. Ensure a minimum of two minutes after electrical disconnection before attempting access. This will allow any moving parts to come to a rest.

**Standard Wiring**

(Typical Installation)



- 1 Remove terminal cover retaining fixings



- 2 Make the connection as per the wiring diagram as above. Replace the terminal cover.



**IMPORTANT**

The fan must be fused at 3A unless it forms part of a 5A lighting circuit. An isolator should be installed to isolate all poles to the fan.