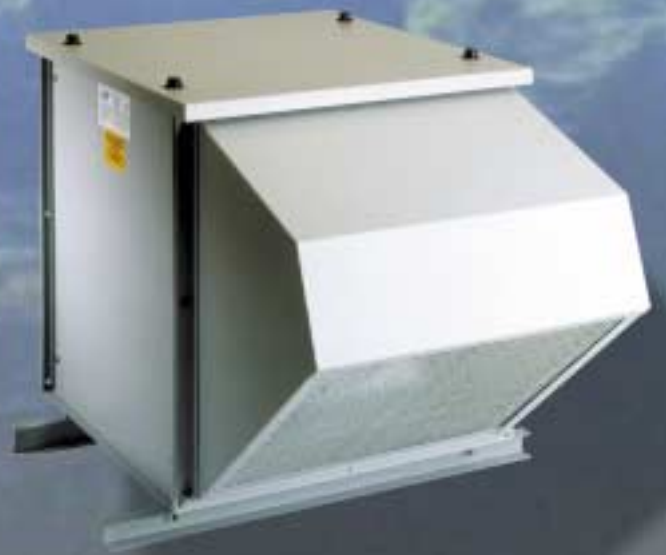


# MYFLO

Mixed Flow Fan Units



Duct Mounting



Weatherproof

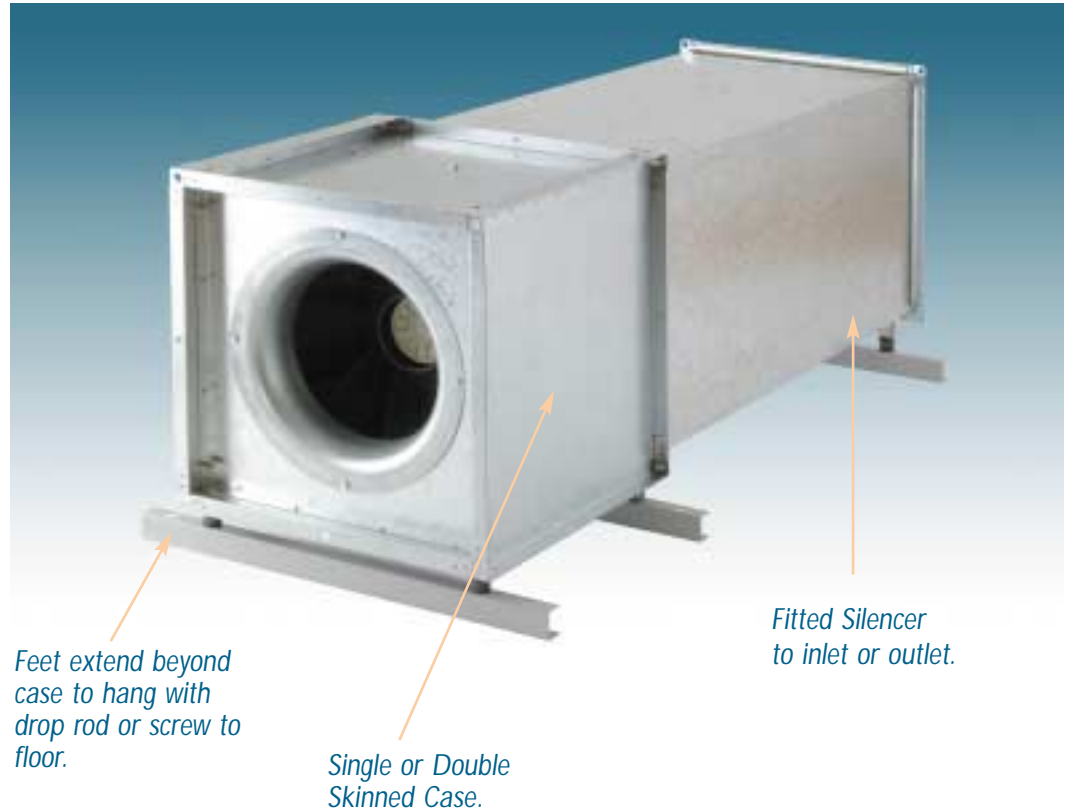
With



*You Breathe Easy*

# MYFLO Features:

At the heart of the MYFLO unit is a superb mixed flow impeller and matching external rotor motor. This unit is exceptionally smooth and quiet running. The mixed flow impeller has a non-overloading design characteristic and is easily cleaned in-situ.



Weatherproof Units have a high level of corrosion resistance, with galvanised steel cases and a powder coat finish, plus roof and outlet cowl.



# MYFLO Unit Selection

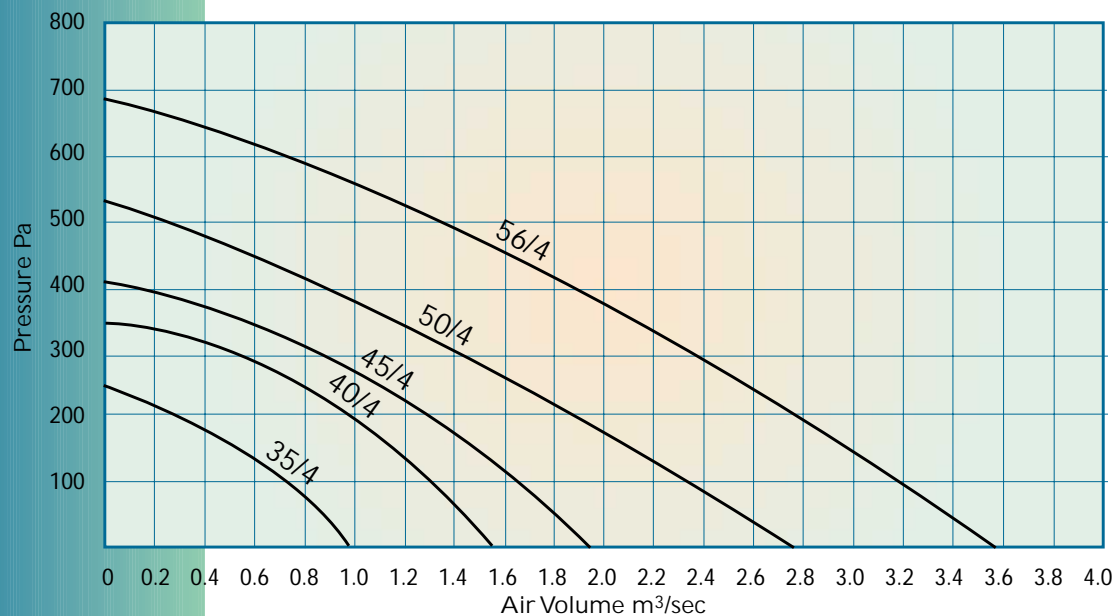
There are five unit sizes, each with an option of a 1400 RPM and a 900 RPM fan. Consider the noise levels when making the selection. Should you require a filter and/or a silencer, please allow for filter resistance at 50Pa and silencer resistance from page 7, in addition to the system resistance.

Indicate the features required as follows:

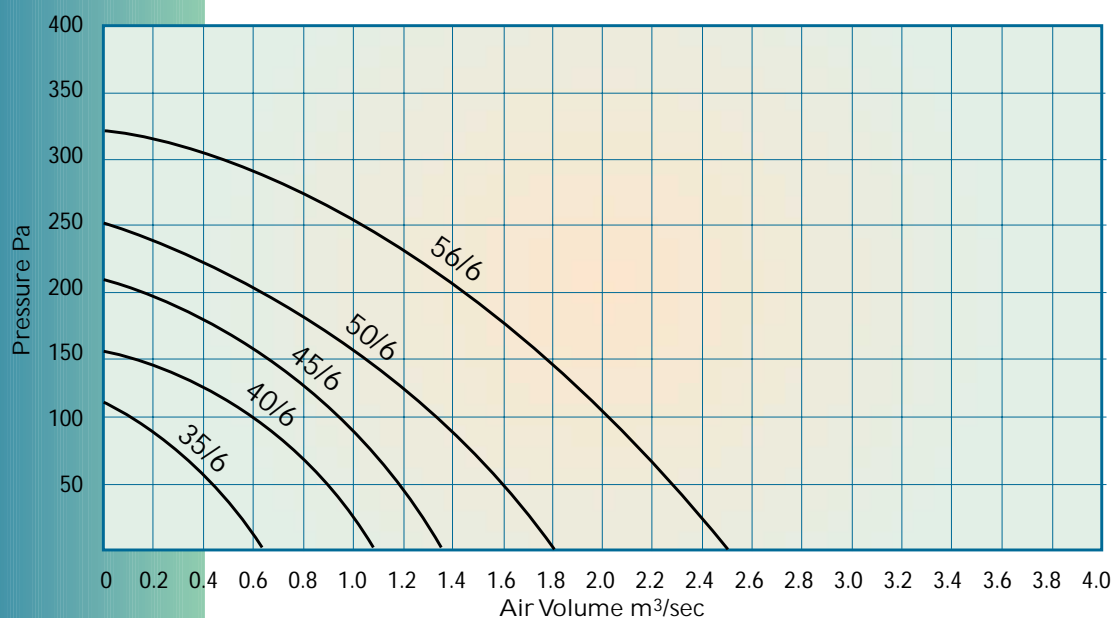
- Single or three phase motor - add 1 or 3 to unit code, eg. MYFLO 40/6-1.
- Double skinned case - add DS to unit code, eg. MYFLO 40/6-1/DS.
- Weatherproof case - add W to unit code, eg. MYFLO 40/6-1/W.

Consider which other components are necessary and list as required: MA silencer, fan speed controller, filter section, mounting feet, A.V. mounts, flexible connections, cowl for weatherproof units, channel base.

## 1400 RPM 4 Pole Units

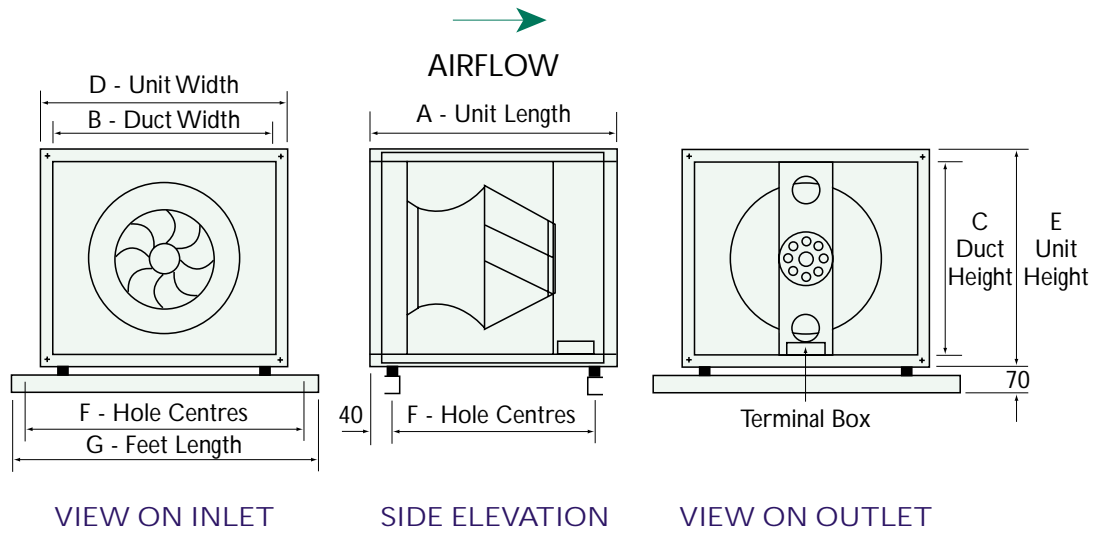


## 900 RPM 6 Pole Units



# MYFLO Duct Mounting Units

## Dimensions

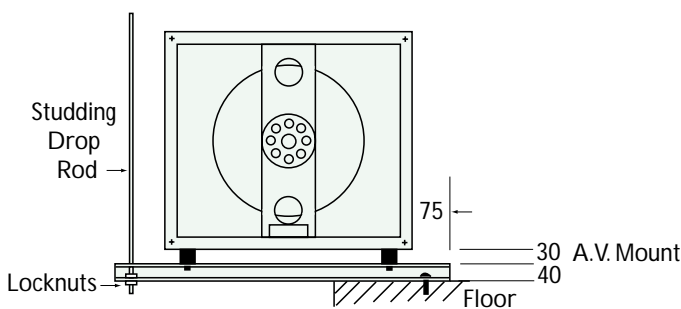


Dimensions in mm.

MYFLO	A	B	C	D	E	F	G	H	Weight kg Single Skin	Weight kg Double Skin
35	500	450	450	500	500	570	650	420	20	30
40	550	550	550	600	600	670	750	470	26	40
45	600	600	600	650	650	720	800	520	32	49
50	630	650	650	700	700	770	850	550	52	72
56	660	750	750	800	800	870	950	580	63	86

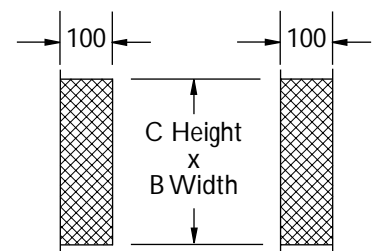
## Mounting Systems

### Mounting Feet and Anti-vibration Mounts



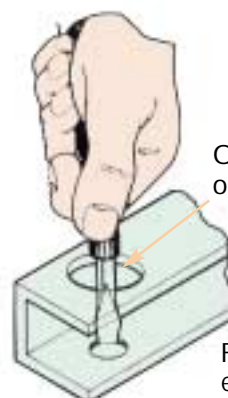
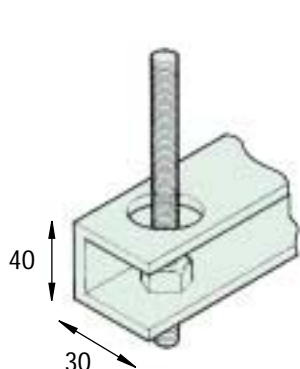
Hang with drop rod or screw to floor.

### Flexible Connections



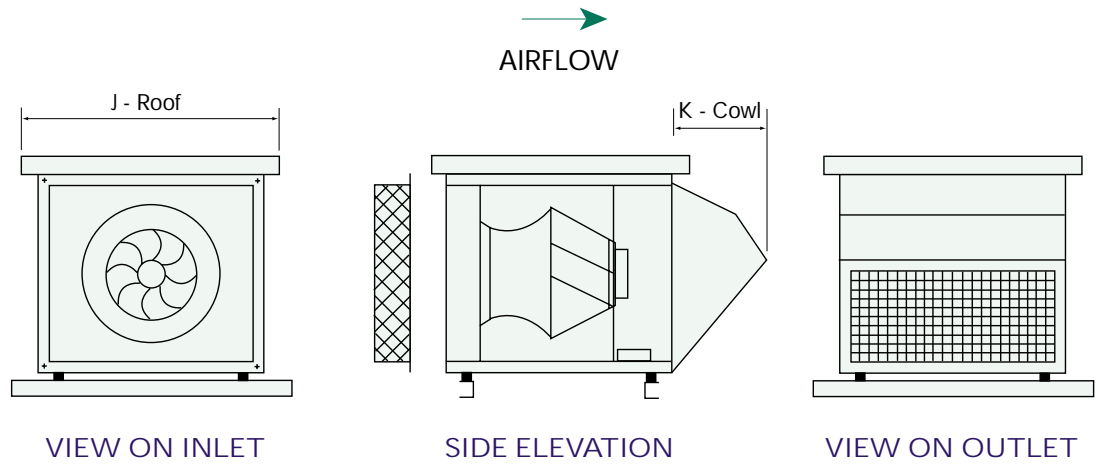
Single  
Flex/Flange

Double  
Flex/Flange



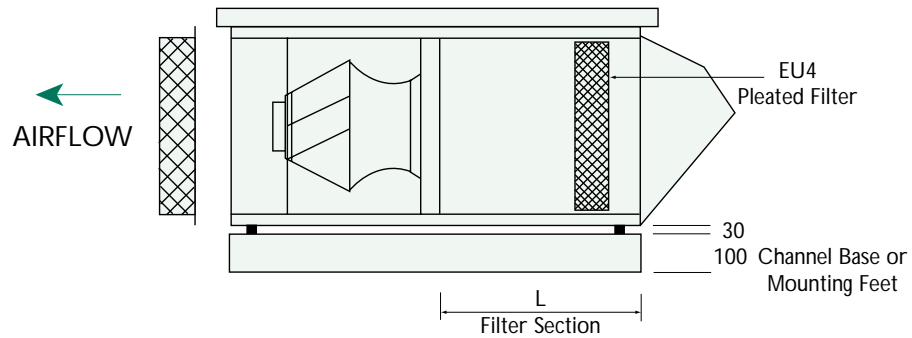
Oversize hole  
on top

# MYFLO Weatherproof Extract Units

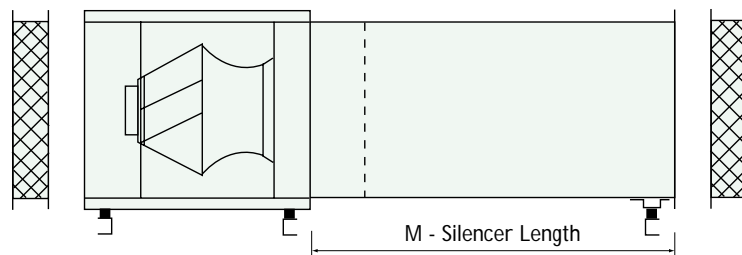


## Optional Assemblies

*Filter Section in plantroom or weatherproof construction*



*Silencers designed to fit direct to inlet or outlet of fan unit*



*Dimensions in mm.*

MYFLO	J Roof	K Cowl	L Filter	M Silencer	Weights kg			
					w/proof with cowl		Filter Section	
					Single skin	Double skin	Single skin	Double skin
35	510	310	500	1000	26	36	10	20
40	610	375	550	1000	33	47	15	29
45	660	410	600	1200	40	57	17	34
50	710	445	630	1200	60	80	19	39
56	810	510	660	1200	73	96	21	44

*All unshown dimensions are as Page 4.*

# MYFLO Electrical Details/Fan Speed Regulators

Fan 1 = 1 phase 3 = 3 phase	Motor Output Watts	FLC Amps Max	Speed RPM	Speed Regulator
35/6-1	120	0.7	890	V2
35/4-1	310	1.4	1390	V2
40/6-1	190	0.8	860	V2
40/6-3	180	0.4	860	SC310
40/4-1	520	2.2	1280	V63
40/4-3	570	1.2	1280	SC310
45/6-1	400	2.2	940	V63
45/6-3	590	1.1	940	SC310
45/4-1	960	4.1	1330	T4
45/4-3	890	1.8	1330	SC310
50/6-1	430	2.5	850	V63
50/6-3	880	1.5	850	SC310
50/4-1	1450	6.7	1310	T8
50/4-3	1350	2.5	1310	SC310
56/6-3	670	1.4	850	SC310
56/4-3	2400	4.5	1350	SC310



V2



V63



T4



T8



SC310

Speed Regulator Model	Dimensions - mm		
	Width	Height	Depth
V2	90	150	45
V63	95	145	50
T4	120	200	100
T8	160	230	120
SC310	223	320	110

## MYFLO Noise Levels

Sound Power Level Spectrum dB re 10<sup>-12</sup>w.PWL

Fan Size	Centre Frequency - Hz								*SPL dBA
	63	125	250	500	1k	2k	4k	8k	
35/6	74	68	65	61	57	55	48	42	44
35/4	79	78	76	73	68	66	51	52	54
40/6	76	68	67	64	58	56	50	45	46
40/4	81	80	78	75	69	67	61	56	57
45/6	78	75	74	67	61	60	55	47	50
45/4	83	84	81	77	72	70	65	58	39
50/6	83	76	76	68	65	63	55	50	34
50/4	89	84	84	78	75	74	67	61	62
56/6	86	80	77	71	68	65	60	56	60
56/4	91	89	87	79	77	76	69	61	70

\* At 3 metres from outlet, free field.

Noise breakout - Sound Pressure Levels at 1 and 3 metres from case.

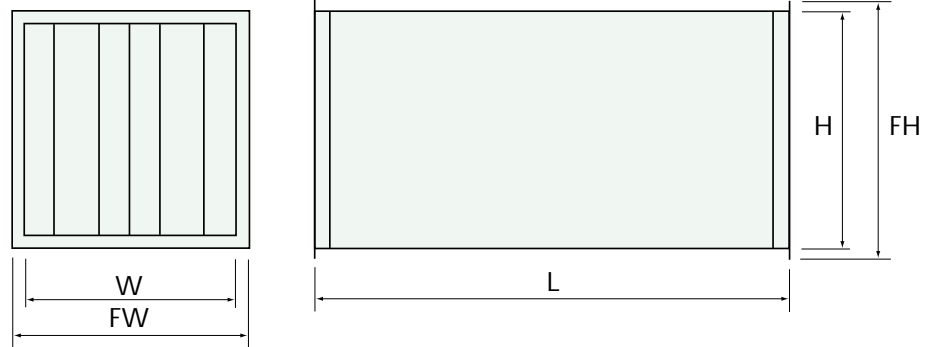
Fan Size	Single Skin Case				Double Skin Case			
	dBA@1m	NR@1m	dBA@3m	NR@3m	dBA@1m	NR@1m	dBA@3m	NR@3m
35/6	41	35	31	25	36	30	26	20
35/4	50	45	40	35	45	40	35	30
40/6	42	35	32	25	37	30	27	20
40/4	52	50	42	40	47	45	37	35
45/6	48	45	38	35	43	40	33	30
45/4	56	55	46	45	51	50	41	40
50/6	50	45	40	35	45	40	35	30
50/4	57	55	47	45	52	50	42	40
56/6	52	50	42	40	47	45	47	35
56/4	61	60	51	50	56	55	46	45

# MYFLO Silencers

Designed to fit directly onto inlet or outlet of MYFLO units.

Model MA standard construction; model MA/PC with external powder coated finish to match the weatherproof MYFLO, model MA/PP has the sound absorbing splitters faced with polythene retained by perforated galvanised steel sheet, making them suitable for kitchen hood extract or other arduous environments. The silencers can also be supplied with a removable panel from which the splitters can be withdrawn for cleaning, specify model MA/RS.

## Dimensions

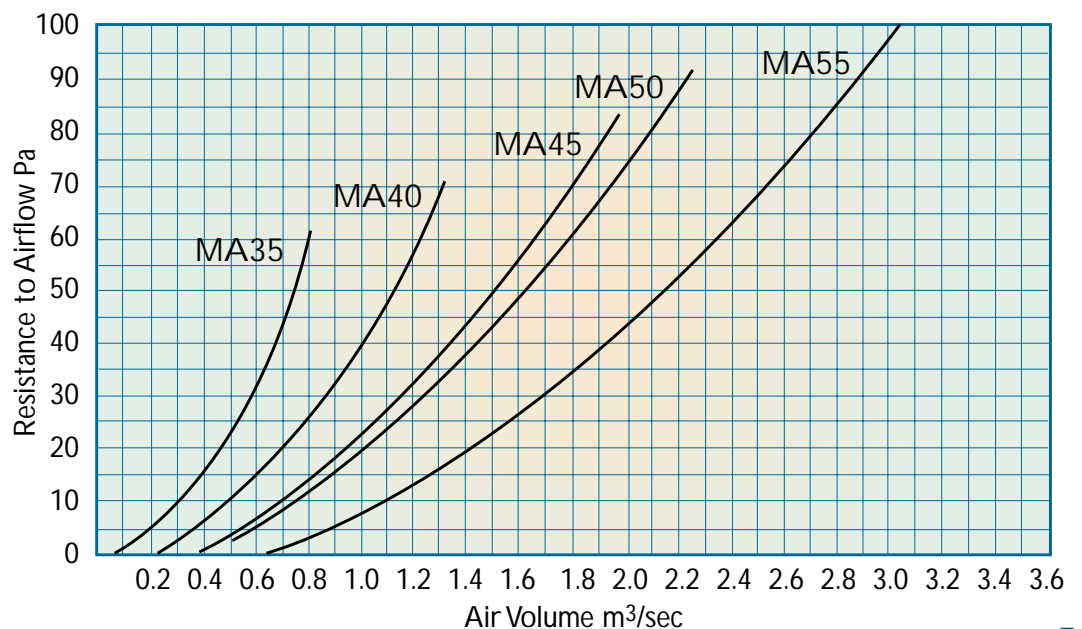


Silencer Model	To Fit MYFLO	Dimensions mm					Weight - kg	
		W	H	L	FW	FH	MA	MA/PP
MA35	35	450	450	1000	500	500	26	33
MA40	40	550	550	1000	600	600	36	44
MA45	45	600	600	1200	650	650	46	55
MA50	50	650	650	1200	700	700	53	70
MA56	56	750	750	1200	800	800	67	78

## Attenuation Insertion Loss, dB, mid frequency octave band.

Model	Centre Frequency - Hz							
	63	125	250	500	1k	2k	4k	8k
MA35	5	9	16	30	39	39	31	26
MA40	4	8	14	28	36	36	28	22
MA45	4	8	16	28	36	36	22	17
MA50	4	8	16	28	36	36	22	17
MA56	5	9	19	33	40	40	30	24

## Silencer Air Pressure Loss



# MYFLO Specification

Each MYFLO unit has been tested in accordance with BS 848, and built under the BS 9001 quality control procedures.

## Fan

Multivane mixed flow impeller, non-overloading design characteristic, direct driven by an external rotor motor. The motors have class B insulation and are maintenance free with sealed for life ball bearings. Motor thermal protection is provided and should be wired in for units that are speed controlled and/or subject to high or low temperatures, or switched on and off at a high rate. The thermal contacts must be connected to the control circuit of the mains contactor to prevent automatic reconnection of the motor to the mains in the event of a fault. All fans are suitable for speed control. The motors are pre-wired to a terminal box within the case to simplify site wiring. The units are suitable for humid air conditions up to 95% RH.

The maximum continuous operating temperature of each fan is as follows:

MYFLO	TEMPERATURE
35/6-1	70°C
35/4-1	60°C
40/6-1	50°C
40/6-3	60°C
40/4-1	60°C
40/4-3	40°C
45/6-1	55°C
45/6-3	60°C
45/4-1	40°C
45/4-3	40°C
50/6-1	65°C
50/6-3	60°C
50/4-1	40°C
50/4-3	40°C
56/6-3	40°C
56/4-3	40°C

## Case - Plantroom Type

The MYFLO unit plantroom cases are rigidly constructed using 1.0mm thick galvanised sheet steel. Single skinned as standard, the units are also available double skinned with an infill of resin bonded mineral wool slab, density 45kg/m<sup>3</sup>, thickness 25mm. An external polyester powder coat finish is available in colour light grey to BS00A05 at extra cost.

The fan and motor are mounted on a frame and are easily removed from the case. Sufficient room should be allowed adjacent to the unit for maintenance access. The unit can be mounted for horizontal or vertical airflow.

MYFLO units can be supplied with flexible connections, mounting feet, A.V. mounts. The unit case and double flanged flexible connections are suitable for fixing direct to the MEZ duct flange system.

## Case - Weatherproof Type

All weatherproof units are manufactured using galvanised steel sheet with an external polyester coat finish in colour light grey to BS00A05. An oversized lid and air intake or outlet cowl is fitted as standard. Single or double skinned construction is available. Mounting feet or a channel base should be supplied with weatherproof units.

## Filter Section

The filter section is the same physical size as the fan section. It can be supplied single or double skinned, in plantroom or weatherproof construction. The access panel can be on the side, top or bottom. Sufficient room should be allowed to withdraw the filter for replacement. The standard filter is a G4 (EU4) 100mm thick pleated panel filter.



*We care about air*

VES reserve the right to amend product specifications and details without notice.

VES Andover Limited  
Eagle Close, Chandlers Ford Industrial Estate,  
Chandlers Ford, Eastleigh, Hampshire SO53 4NF

Tel: 08702-40-43-40  
Fax: 08702-40-45-50  
e-mail: vesltd@ves.co.uk  
www.ves.co.uk



ISO 9001-2000  
Cert. No. Q5375

Leaflet No. 788-2/01